

ZELTA3D

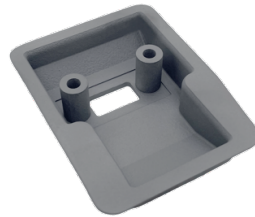
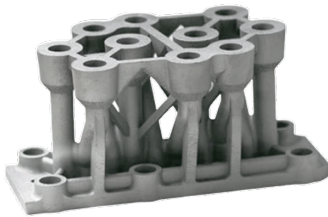
Prepared at 23 Dec 2022

SLM SS316L STAINLESS STEEL MATERIAL DATASHEET

ZELTA3D

Description

SS316L is a low-carbon stainless steel alloy, recommended for functional parts due to its impressive strength, ductility, high resistance to corrosion and good thermal properties. Comes in raw matte metallic appearance.



Technical Data

Material Name	SLM SS316L STAINLESS STEEL
Appearance	Raw matte metallic
Surface	Raw Matte
Density	~7.99 g/cm ³

Material	Black
Metal Type (Close to)	Cast Stainless Steel 316
D638 Ultimate Tensile Strength (XY)	670 MPa
D638 Ultimate Tensile Strength (Z)	620 MPa
D638 Yield Strength (XY)	540 MPa
D638 Yield Strength (Z)	490 MPa
Modulus of elasticity (XY)	190 GPa
Modulus of elasticity (Z)	190 GPa
Elongation at break (XY)	40%
Elongation at break (Z)	35%
Melting Point	~ 1300 °C
Hardness (Vickers)	~ 170 HV
Roughness R_a	10-20